

## HPS™ – HIGH PERFORMANCE STREET MOTOR OIL

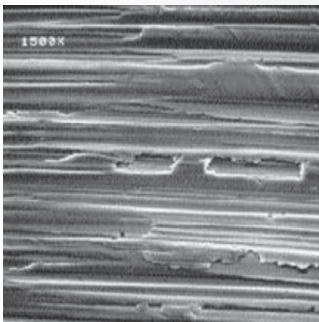
Royal Purple HPS Series motor oil is specifically formulated to maximize performance and meet the demands of high performance and modified engines. HPS is recommended for vehicles no longer under manufacturer warranty and for those seeking a higher level of performance and protection.

This unique blend enables HPS to outperform leading synthetics and conventional lubricants for both gasoline and diesel engines. Royal Purple's HPS is fortified with a high level of zinc/phosphorus anti-wear additive and Royal Purple's proprietary Synerlec® additive technology.

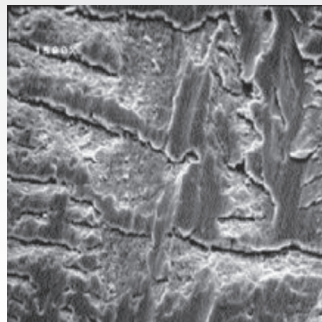
HPS is available in the following viscosities: 5W-20, 5W-30, 10W-30, 10W-40 and 20W-50.



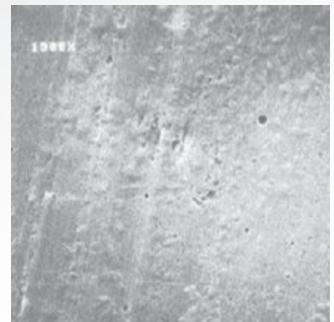
### TAKE A LOOK AT THE FOLLOWING PHOTOS:



*A new bearing surface appears smooth until magnified 1500X.*



*The bearing is scuffed after using a leading synthetic motor oil.*



*The bearing is visibly smoother after using Royal Purple HPS.*



# ENGINE OILS

## PERFORMANCE ADVANTAGES

- Exceptionally high film strength for dramatic reductions in engine wear and reduced heat engine to extend the life of your engine.
- Improved sealing between the piston ring and cylinder wall maximizes horsepower and torque and optimizes fuel economy.
- Exceptional oxidation stability extends oil life and allows for more miles driven between oil changes saving you time, money and reducing the impact on the environment.
- Advanced synthetic solvency reduces engine deposits and keeps engines clean
- It protects valve trains using roller or flat tappet lifters that require added protection due to high lift/ high ramp rate camshafts.
- Provides superior corrosion protection.

## PART NUMBERS

### 5W-20

|                 |       |
|-----------------|-------|
| 320-Gal. Tote   | 39520 |
| 55-Gal. Drum    | 37520 |
| 5-Gal. Pail     | 35520 |
| 12-Qt. Case     | 32520 |
| 1-1-Qt. Bottle* | 31520 |

### 5W-30

|                 |       |
|-----------------|-------|
| 320-Gal. Tote   | 39530 |
| 55-Gal. Drum    | 37530 |
| 5-Gal. Pail     | 35530 |
| 12-Qt. Case     | 32530 |
| 1-1-Qt. Bottle* | 31530 |

### 10W-30

|                 |       |
|-----------------|-------|
| 320-Gal. Tote   | 39130 |
| 55-Gal. Drum    | 37130 |
| 5-Gal. Pail     | 35130 |
| 12-Qt. Case     | 32130 |
| 1-1-Qt. Bottle* | 31130 |

### 10W-40

|                 |       |
|-----------------|-------|
| 320-Gal. Tote   | 39140 |
| 55-Gal. Drum    | 37140 |
| 5-Gal. Pail     | 35140 |
| 12-Qt. Case     | 32140 |
| 1-1-Qt. Bottle* | 31140 |

### 20W-50

|                 |       |
|-----------------|-------|
| 320-Gal. Tote   | 39250 |
| 55-Gal. Drum    | 37250 |
| 5-Gal. Pail     | 35250 |
| 12-Qt. Case     | 32250 |
| 1-1-Qt. Bottle* | 31250 |

**\*AVAILABLE IN CASES ONLY**